



Clare Flat Living Room

CLARE

FLAT

Designed to provide airy and comfortable living, the Clare flat consists of over 1,400 square feet with 2 bedrooms, 2 baths, and a 3rd bedroom or storage room on the lower level.

FLOOR PLAN HIGHLIGHTS

- 10' Coffered Ceilings
- Open staircase
- Stainless steel appliances
- Granite kitchen and bathroom countertops
- Micro hoods vented to exterior
- Under cabinet lighting
- Metal balusters with wood handrails
- Storage closet / pantry
- Full-sized, front-load washer and dryer
- 8' high doors (upgrade)



Kitchen



Standard Bathroom



Wood handrails w/ Metal Balusters

CLARE

FLAT

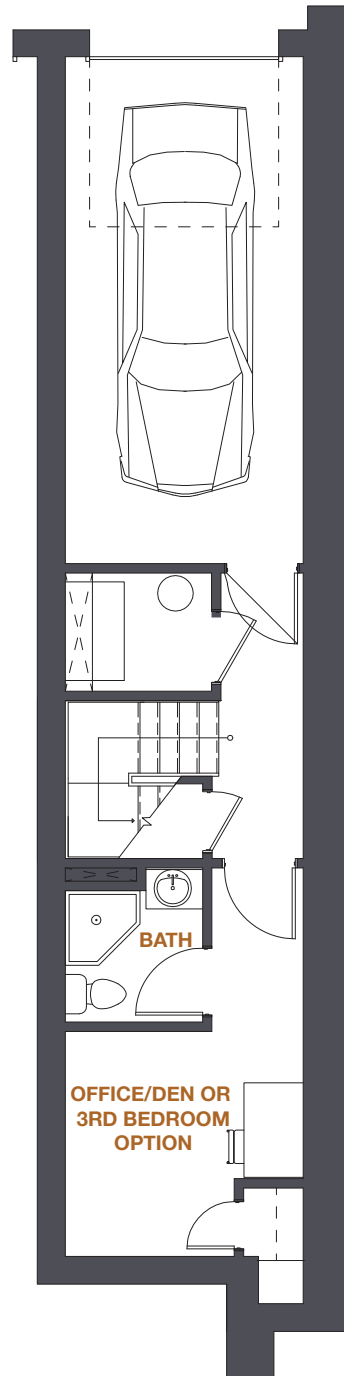
LOWER LEVEL GARAGE

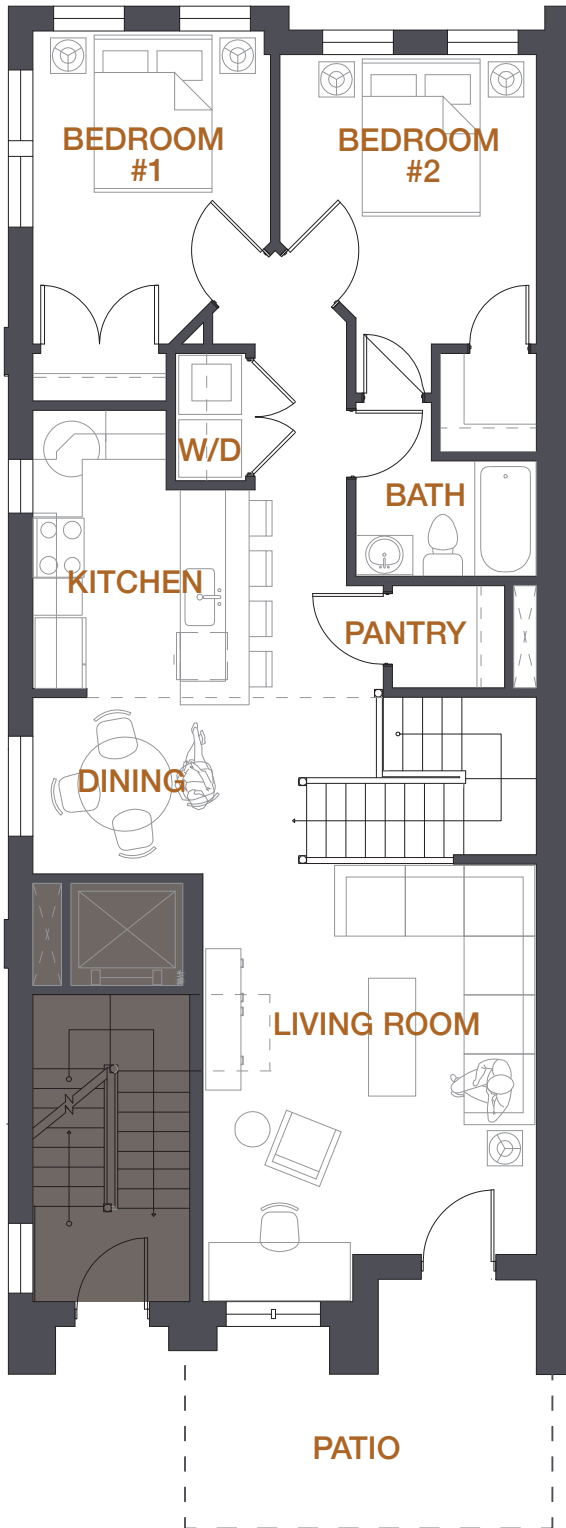
The lower level of the Clare offers a 1-car attached garage along with an additional parking space in the driveway. Also featured here is an office/den with a full bath that is upgradeable to a bedroom and a small closet under the stairs for additional storage.

ROOM DIMENSIONS

Office/Den or Bedroom 10'1" x 9'9"

Full Bath 5'11" x 5'8"





CLARE

FLAT

FIRST FLOOR FLAT MAIN LIVING/BEDROOMS

The main entrance opens onto a large living room with a recessed desk area. A bar counter and dining area provide efficient spaces for entertaining along with a campus-facing patio off the front entrance. Two bedrooms sharing a jack and jill hall bathroom round out the main level of this flat.

ROOM DIMENSIONS

Living Room	14'3" x 18'8"
Kitchen	6'3" x 11'11"
Dining	6'3" x 7'7"
Bath	7'9" x 7'5"
Bedroom #2	10'2" x 13'5"
Bedroom #3	11' x 12'5"



Standard Bedroom